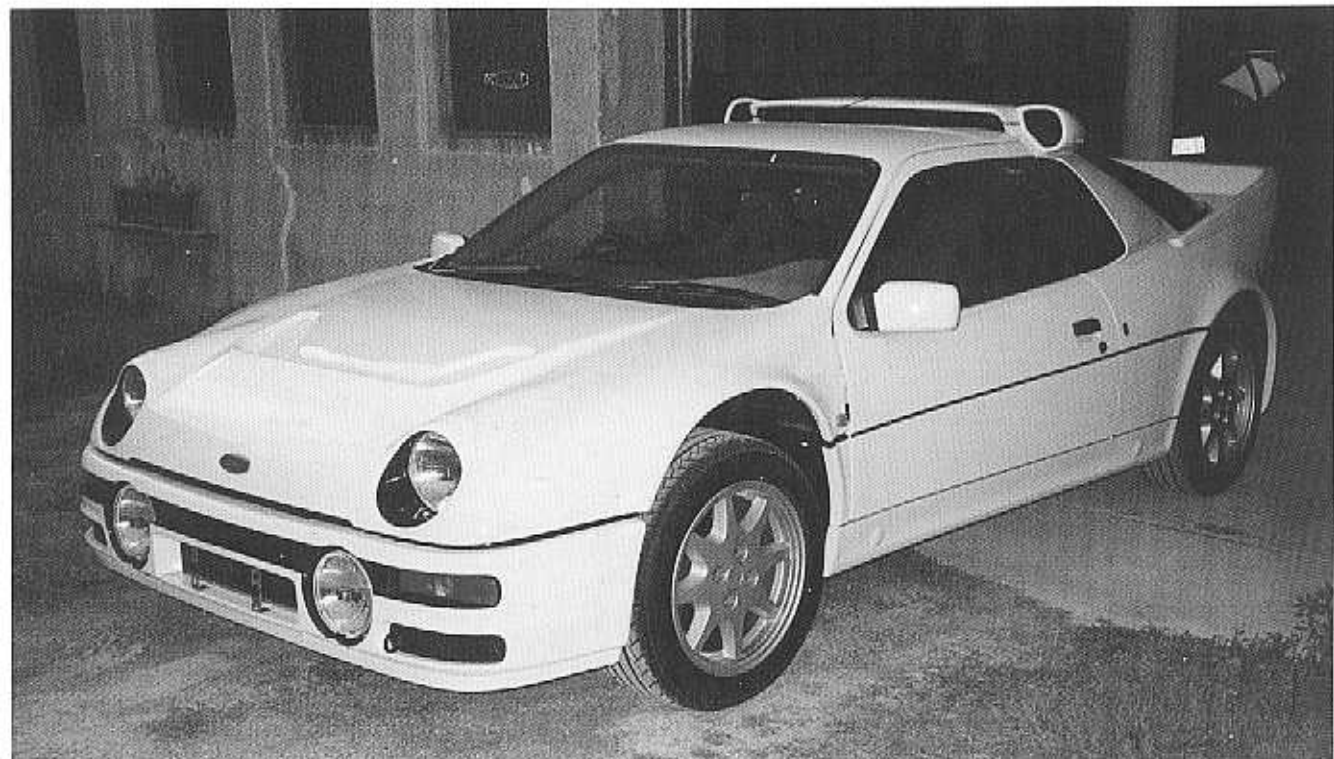


1986 FORD RS200 COUPE
COACHWORK BY GHIA

Chassis no. 00175 Engine no. GLOO175



One of the design parameters of the RS200 Group B car was that the standard version should be a credible road car with a properly trimmed cockpit with even provision for a radio. Of all Group B rally cars, the RS200 is the most practical and comfortable car for everyday use.

Consultant to the project was Gordon Murray, chief designer of the Brabham Formula One team. Chassis design was in the hands of ex-BRM and Lotus designer, Tony Southgate, while Cosworth provided the 1803cc turbocharged BDT engine which produced 250 bhp in standard trim. As with most other Group B cars, it was mid-engined and had four-wheel drive.

Only 200 RS200s of any description were made and this is one of only 20 fitted with a 350 bhp Cosworth engine. British registered, it is finished in white with black carpets and red rally seats and has covered a documented 6,500 miles from new. The owner, a rally car collector, describes it as 'excellent' in every respect.

De toutes les voitures du Groupe B, une formule malheureusement fugitive, la Ford RS200 est certainement la plus utilisable au quotidien, la plus confortable, ses concepteurs ayant voulu lui conserver un habitacle de voiture de tourisme avec même la radio.

Le moteur central Cosworth de 1803 cm³ à compresseur développait 230 CV en version normale mais 20 exemplaires reçurent un moteur de 350 CV, comme le modèle présenté, carrosserie blanche, sièges sport rouge, tapis noirs, qui n'a couvert que 10.000 km et se trouve en parfait état.

Documents de circulation britanniques.

Estimate FF 330,000 - 360,000